



PLAZA CONFERENCE CENTRE

Name of Room	L x W x H Dimensions	Total Sq. Feet	Booths 8' x 10'	Booths 10' x 10'	Classroom	Theatre	U-Shape	Reception	Rounds of 10	H-Square	Boardroom
Plaza ABC	165' x 90' x 17'	14,850	92	74	750	1,700	–	2,000	1,300	–	–
Plaza A	90' x 55' x 17'	4,950	30	27	250	500	100	660	400	120	–
Plaza B	90' x 55' x 17'	4,950	30	27	250	500	100	660	400	120	–
Plaza C	90' x 55' x 17'	4,950	30	27	250	500	100	660	400	120	–
Plaza Foyer	146' x 59'	8,614	33	28	–	–	–	1,200	–	–	–
Toronto AB	44.5' x 44' x 8.6'	1,958	14	8	80	160	48	240	120	46	46
Toronto A	44' x 24' x 8.6'	1,056	7	4	40	80	32	120	60	36	28
Toronto B	44' x 22' x 8.6'	928	7	4	40	80	32	120	60	36	28
Montreal AB	35' x 48' x 8.6'	1,680	10	7	80	150	45	170	120	40	40
Montreal A	35' x 24' x 8.6'	840	5	3	40	75	32	85	60	36	28
Montreal B	35' x 24' x 8.6'	840	5	3	40	75	32	85	60	36	28
Ottawa	34' x 26' x 8.6'	884	5	2	40	80	30	180	60	40	28
Windsor	22' x 26' x 8.6'	572	4	3	20	50	20	60	40	24	18
Hamilton	22' x 26' x 8.6'	572	4	3	20	50	20	60	40	24	18

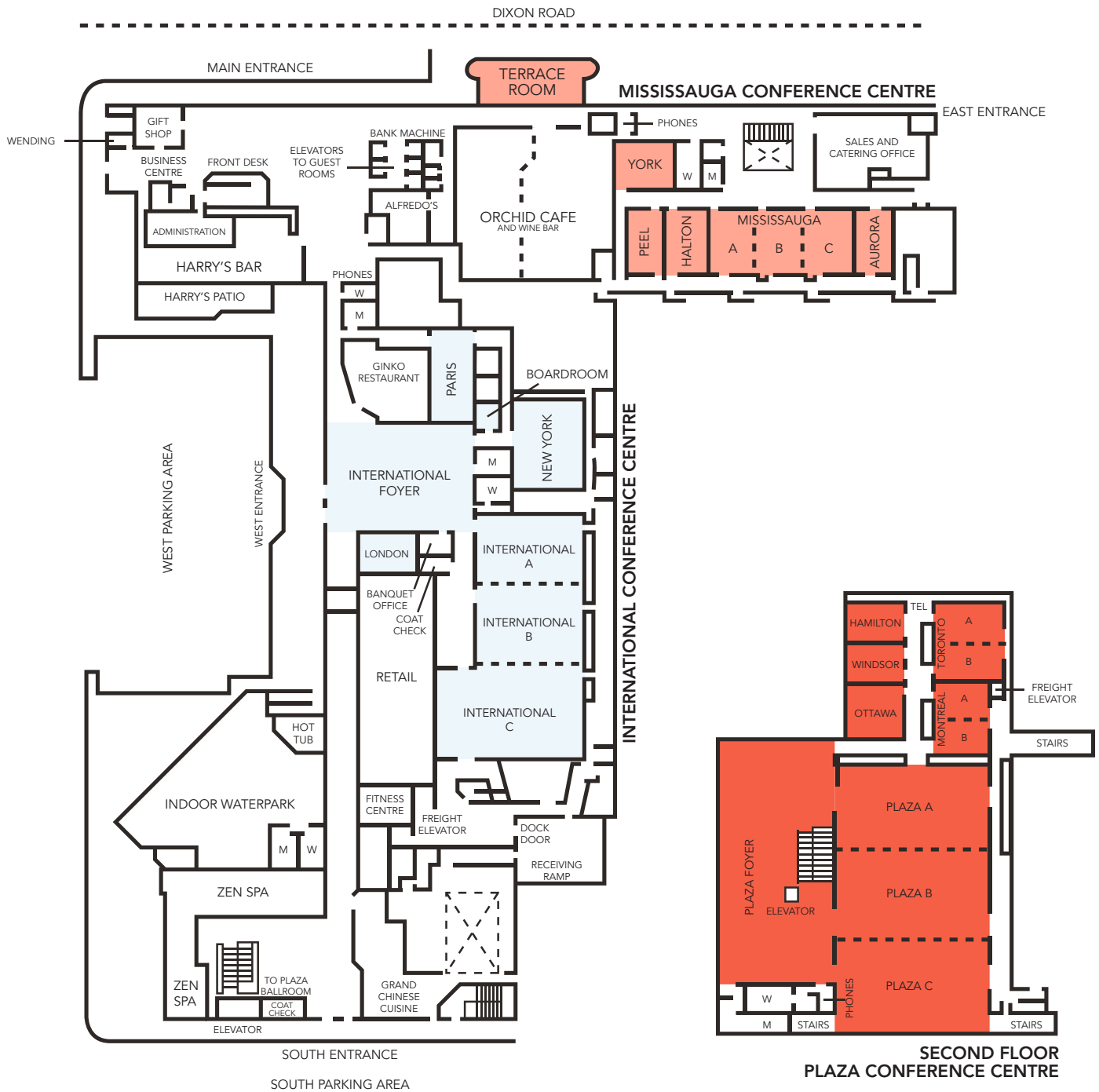
INTERNATIONAL CONFERENCE CENTRE

Name of Room	L x W x H Dimensions	Total Sq. Feet	Booths 8' x 10'	Booths 10' x 10'	Classroom	Theatre	U-Shape	Reception	Rounds of 10	H-Square	Boardroom
International ABC	58' x 170' x 13.10'	9,860	57	53	540	900	–	1,150	850	–	–
International A	58' x 44' x 13.10'	2,552	15	12	120	220	60	275	200	75	45
International B	58' x 44' x 13.10'	2,552	15	12	120	220	60	275	200	75	45
International C	82' x 58' x 13.10'	4,756	30	24	220	500	80	600	370	100	60
Int'l Foyer	70' x 70'	4,900	–	24	–	–	–	600	–	–	–
New York	41' x 51' x 11.6'	2,091	–	–	50	120	40	170	140	40	30
Paris	45' x 25' x 11.6'	1,125	–	–	48	80	32	130	80	36	30
London	33' x 23' x 11.6'	759	–	–	20	50	24	70	50	28	20
Int'l Boardroom	15' x 16' x 8.10'	240	–	–	–	–	–	–	–	–	8

MISSISSAUGA CONFERENCE CENTRE

Name of Room	L x W x H Dimensions	Total Sq. Feet	Booths 8' x 10'	Booths 10' x 10'	Classroom	Theatre	U-Shape	Reception	Rounds of 10	H-Square	Boardroom
Mississauga ABC	38' x 84' x 9'	3,192	14	14	120	300	–	300	180	–	–
Mississauga A	38' x 28' x 9'	1,092	–	–	40	100	32	100	60	40	24
Mississauga B	38' x 28' x 9'	1,092	–	–	40	100	32	100	60	40	24
Mississauga C	38' x 28' x 9'	1,092	–	–	40	100	32	100	60	40	24
Terrace	75' x 20' x 13.6'	1,500	–	–	50	100	20	150	90	20	20
Halton	38' x 27' x 9'	1,026	–	–	40	100	32	86	60	40	28
York	27' x 31' x 9'	837	–	–	–	–	–	–	–	–	12
Peel	38' x 20' x 9'	760	–	–	24	50	20	65	40	28	18
Aurora	38' x 20' x 9'	760	–	–	24	50	20	65	40	28	18

Note: The above capacities are strictly seating and tables only. There are no provisions made for head table, staging, A/V equipment or any other additions.



**INTERNATIONAL PLAZA
HOTEL + CONFERENCE CENTRE
TORONTO AIRPORT**

655 Dixon Road, Toronto, ON M9W 1J3
T: 416-244-1711 F: 416-244-9584
www.internationalplazahotel.com

GDS CODES
Amadeus: YYZ238
Apollo/Galileo: 72791
Sabre/Worldspan: 10643